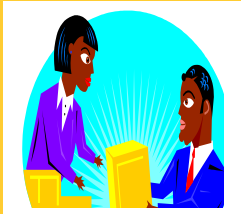


Hawaii Family Literacy Consortium/ (808)692-8210



Even Start Statewide Family Literacy Initiative Conference

On December 5-7, 2000, three HFLC consortium members attended the Even Start Statewide Family Literacy Initiative Conference in Washington, DC. The purpose of this conference was to gather the representatives from all 34 states that received the Even Start Statewide Initiative Grant, and to share the latest information about the grant. Representatives also heard presentations from the US Department of Education and the RMC Research Corp., who is contracted by the USDOE to offer technical assistance to the grantees. State initiatives from Pennsylvania, Ohio, Massachusetts, Missouri, Oregon, New York, and Connecticut also shared their grant with the group. The Aloha Spirit was shared with everybody by the Hawaii delegation who brought up calendars, yarn leis, and yarn woven containers to hold candies. Mahalo to Carol Sullivan and her mom who sewed the leis and the containers.



Consortium Library

The Hawaii Family Literacy Consortium has begun to create a lending library. On file are manuals, materials, books, and papers that have been collected by consortium members. For a library list, please call our office at 692-8210. Donated materials are also welcomed.



Individual Highlights:

DC Conference	1
Library	1
NCFL	2
Events	2
Meetings	2
Sites	3
Web Sites	3



National Conference on Family Literacy

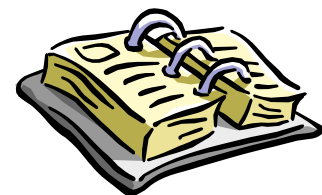


The 10th Annual National Conference on Family Literacy will be held on March 18 - 20, 2001, in Dallas, Texas. Pre-conference Professional Development Training Sessions will be held on March 16-17. Site of the conference is the Hyatt Regency Hotel in downtown Dallas. Deadline for early registration is February 12, 2001. For more information on the conference go to www.familit.org



Upcoming Literacy Events – Nationally and Locally for January - March

- | | |
|----------|--|
| February | - National Association for Bilingual Education in Phoenix, Arizona
- Safe and Drug Free Schools Conference in Hawaii |
| March | - National Family Literacy Conference in Dallas, Texas
- E-School Conference in Hawaii
- California Association and Pacific American Education in San Jose, California |



Hawaii Family Literacy Consortium Meeting

The Hawaii Family Literacy Consortium meets on the third Thursday of each month. Currently, all meetings are being held at the McKinley Community School for Adults. Due to availability of the meeting room, January's meeting is on the 25th at 9:00 am, Room 110. For more information please call our office at 692-8210.



Hawaii Family Literacy Consortium

c/o Kapolei
Community School
for Adults
91-5007 Kapolei
Parkway
Kapolei, Hawaii
96707



Phone:
(808) 692-8210

Fax:
(808) 692-8250

E-Mail:
Solomon_Jr._Kaulukukui
@notes.k12.hi.us



**... working together
to improve and support
Family Literacy in
Hawaii**

Family Literacy in Hawaii

In 1998, Congress passed legislation that defined family literacy as “services that are of sufficient intensity in terms of hours, and of sufficient duration, to make sustainable changes in a family and that integrate all of the following activities:

- A) Interactive literacy activities between parents and their children.
- B) Training for parents regarding how to be the primary teacher for their children and full partners in the education of their children.
- C) Parent literacy training that leads to economic self-sufficiency.
- D) An age-appropriate education to prepare children for success in school and life experiences.”

In Hawaii, family literacy is an approach to learning that incorporates the strengths and resources of families. It combines intensive long-range services in early childhood education and training for parents as their child’s first teacher. It can encompass welfare reform, school reform and early childhood initiatives.

Currently, there are 6 Even Start Demonstration sites in the State of Hawaii. These sites are at Waiialua Elementary School (Oahu), Blanche Pope Elementary School (Oahu), Lihikai Elementary School (Maui), Laupahoehoe High and Elementary School (Hawaii), Na’alehu Elementary and Intermediate School (Hawaii), and Konawaena High School (Hawaii). For more information about these sites, please call Sandra Ishikawa, Even Start Resource Teacher, at 394-1384. Other schools that are non-Even Start sites but have a similar program are Likelike Elementary School (Oahu) and Makaha Elementary School (Oahu). Information about these programs may be obtained from the school’s principal.

Family Literacy Web Sites

Currently, the Hawaii Family Literacy Consortium is working on putting together a web page for our organization. Once it is up, we will let everybody know the URL address. In the mean time, the following web sites have a lot of information on Family Literacy:

National Center for Family Literacy: www.famlit.org
National Institute for Literacy : www.nifl.gov
Western /Pacific Literacy Network: http://literacy_net.org/lincs
Hawaii Network for Literacy: http://literacy_net.org/hawaii

About Our Organization...

The Hawaii Family Literacy Consortium was established in May, 1999, by the State Superintendent of Education, to begin work on an Even Start Statewide Family Literacy Initiative to unify, strengthen and expand family literacy services in Hawaii. The task of this consortium is to develop indicators of program quality, to establish a system of support and resources for family literacy, and to build local capacity for the expansion of family literacy throughout the state. The consortium is composed of representatives of federal and state agencies, parents, educators, and private and non-profit organizations.